

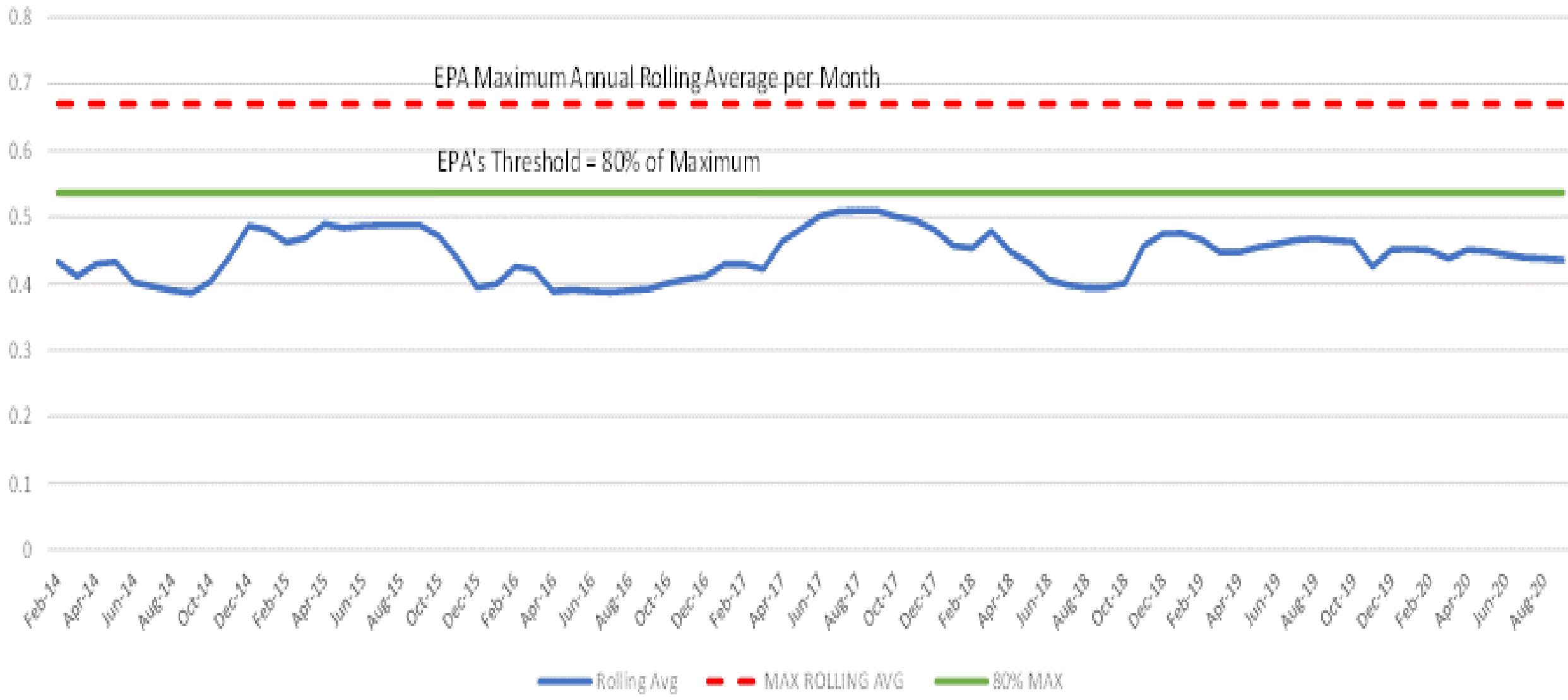
Outfall 001

Parameter	Flow	Flow	Flow	Flow	BOD5	BOD5	BOD5	BOD5
	Annual Rolling Ave	Monthly Ave	Monthly Ave	Daily Max	Monthly Ave	Monthly Ave	Weekly Ave	Weekly Ave
Units	MGD	MGD	MGD	MGD	lb/d	mg/L	lb/d	mg/L
Effluent Limit	0.67	0.67	1.2	Report	165	30	252	45
Minimum	0.386	0.205	0.293	0.246	5.7	2.4	6.7	2.9
Maximum	0.51	0.958	0.985	2.621	51.9	9.8	159	31.3
Average	0.44	0.313	0.586	0.854	18.4	4.77	29.6	6.53
No. of Violations	0	2	0	N/A	0	0	0	0
2/28/2014	0.433		0.562	1	45.9	9.8	133.3	22.4
3/31/2014	0.411		0.608	2.076	36	7.1	40.3	10.5
4/30/2014	0.43		0.627	1.201	29.8	5.7	66.6	7.3
5/31/2014	0.433		0.371	0.713	13	4.2	19.7	5
6/30/2014	0.402	0.272		0.374	10.2	4.5	17.1	7.2
7/31/2014	0.396	0.262		0.446	10.1	4.6	12.5	5.3
8/31/2014	0.39	0.211		0.275	9	5.1	11.6	6.5
9/30/2014	0.386	0.208		0.315	6.9	4	7.3	5
10/31/2014	0.403	0.445		2.621	13	3.5	18	4.9
11/30/2014	0.4	0.694		1.229	24.3	4.2	32.7	4.5
12/31/2014	0.487		0.985	2.496	44.4	5.4	159	7.9
1/31/2015	0.481		0.524	0.972	23.6	5.4	30.4	6.9
2/28/2015	0.462		0.336	0.405	16.3	5.8	19.8	7
3/31/2015	0.469		0.693	1.499	27.7	4.8	42.9	5.7
4/30/2015	0.49		0.884	1.708	22.9	3.1	36.6	4
5/31/2015	0.484		0.293	0.429	6.6	2.7	6.8	3.7
6/30/2015	0.487	0.309		0.764	9.5	3.7	11.9	5
7/31/2015	0.488	0.275		0.48	6.4	2.8	12.3	3.3
8/31/2015	0.488	0.205		0.246	7.5	4.4	9	5.8
9/30/2015	0.488	0.217		0.631	6.5	3.6	11.1	4.3
10/31/2015	0.471	0.234		0.325	5.7	2.9	6.7	3.7
11/30/2015	0.437	0.289		0.408	9.2	3.8	12.2	4.1
12/31/2015	0.394		0.474	1.037	13	3.3	21.4	3.6
1/31/2016	0.399		0.573	0.992	18.2	3.8	20.3	4.3
2/29/2016	0.426		0.669	1.085	26.2	4.7	53.3	6.4
3/31/2016	0.421		0.628	1.234	31.4	6	46.1	7.6
4/30/2016	0.388		0.486	0.8	15	3.7	26.7	5
5/31/2016	0.391		0.331	0.52	8.6	3.1	10.8	3.6
6/30/2016	0.389	0.292		0.48	11.4	4.7	19.4	5.5
7/31/2016	0.387	0.246		0.29	9.4	4.6	14.7	6.4
8/31/2016	0.39	0.243		0.284	8.1	4	9	4.3

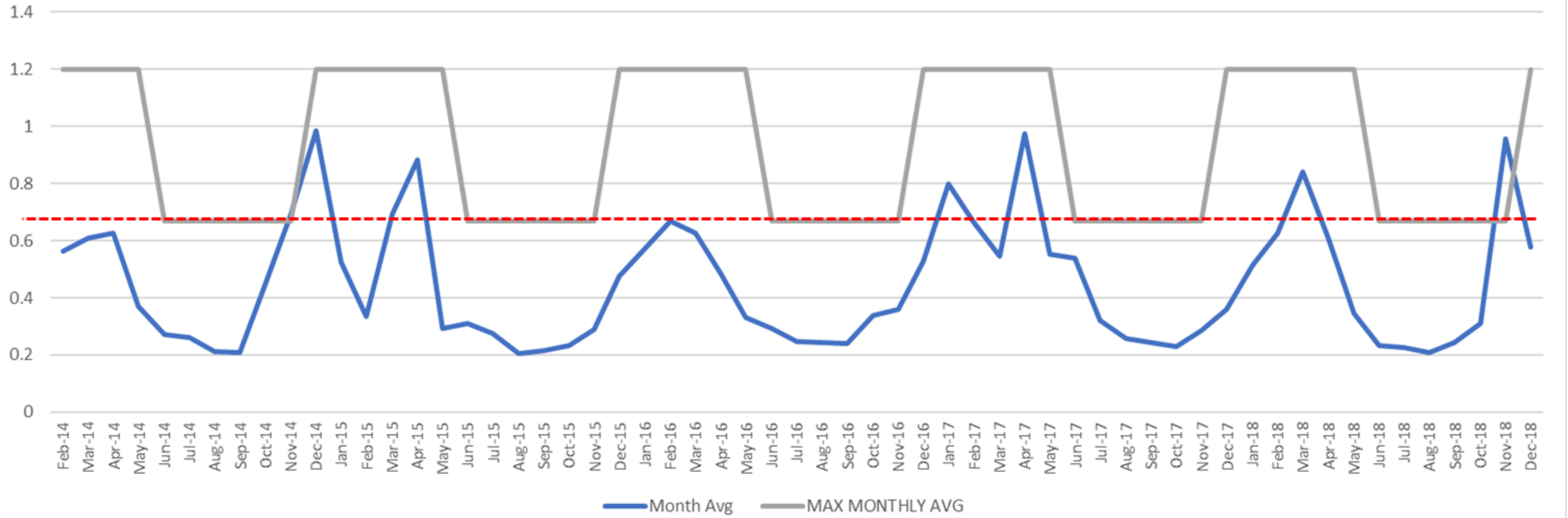
Parameter	Flow	Flow	Flow	Flow	BOD5	BOD5	BOD5	BOD5
	Annual Rolling Ave	Monthly Ave	Monthly Ave	Daily Max	Monthly Ave	Monthly Ave	Weekly Ave	Weekly Ave
Units	MGD	MGD	MGD	MGD	lb/d	mg/L	lb/d	mg/L
Effluent Limit	0.67	0.67	1.2	Report	165	30	252	45
9/30/2016	0.392	0.241		0.286	10	5	12.6	6
10/31/2016	0.401	0.339		0.675	19.8	7	20	8.7
11/30/2016	0.407	0.361		0.671	25.9	8.6	46.6	10.9
12/31/2016	0.411		0.527	0.894	42.2	9.6	44.8	11.3
1/31/2017	0.43		0.737	1.829	46.5	7	101.8	9.3
2/28/2017	0.43		0.664	0.869	28.2	5.1	32.5	5.4
3/31/2017	0.422		0.546	0.848	25.5	5.1	36.1	5.8
4/30/2017	0.463		0.974	2.184	39	4.8	93.2	6.8
5/31/2017	0.482		0.553	0.883	15.2	3.3	17.2	4
6/30/2017	0.502	0.538		1.026	11.7	2.6	28.5	3.6
7/31/2017	0.509	0.322		0.484	11.5	4.3	19.7	6.5
8/31/2017	0.51	0.256		0.302	9	4.2	9.6	4.6
9/30/2017	0.51	0.245		0.305	11.2	3.5	8.6	4.1
10/31/2017	0.501	0.23		0.641	7.1	3.7	7.9	4.1
11/30/2017	0.495	0.284		0.416	9	3.8	11.4	4.9
12/31/2017	0.481		0.358	0.511	14.6	4.9	19.9	5.3
1/31/2018	0.457		0.514	1.171	28.7	6.7	43.5	7.8
2/28/2018	0.454		0.627	1.05	33.5	6.4	38.2	7.7
3/31/2018	0.479		0.84	1.749	51.9	7.4	55.8	7.8
4/30/2018	0.448		0.613	1.055	26.1	5.1	31.3	31.3
5/31/2018	0.431		0.346	0.573	16.7	5.8	21.9	6.9
6/30/2018	0.406	0.232		0.33	7.9	7.9	9.4	9.4
7/31/2018	0.398	0.227		0.338	9.3	4.9	12.1	6.4
8/31/2018	0.394	0.21		0.297	6.3	3.6	8.1	5.3
9/30/2018	0.394	0.244		0.408	7.1	3.5	9.6	4.1
10/31/2018	0.401	0.311		0.646	7	2.7	7.2	3.5
11/30/2018	0.451	0.958		1.687	26.4	3.3	44.1	4
12/31/2018	0.475		0.576	0.951	11.5	2.4	18.1	2.9

# MBTS Sewage Tx Plant Discharge vs. EPA/DEP Limits

(Annual Rolling Monthly Average MGD vs. EPA/DEP Limit for 2019-2024)



### MBTS Sewage Tx Plant Discharge vs. EPA/DEP Limits



# MBTS Sewage Tx Plant Discharge vs. EPA/DEP Limits

(Annual Rolling Monthly Average MGD vs. EPA/DEP Limit for 2019-2024)

